



DVX v3.1.7

Main View

Date: October 12, 2018

File: C:\Users\User\Documents\DVX Data\CMC-CDR-x16-1.cdx

Disc Type: CD-R 80 Sessions: 01 Tracks: 01 Format: Data - Joliet Disc ID: 30 map 2017 Block Size: 2048

Error Rates

Ave BLER 3.8	Ave E11 3.7	Ave E21 0.1	Ave E31 0.1	Ave E12 0.6	Ave E22 0	Ave E32 0	Tot E22 0
Pk BLER 33.0	Pk E11 19.0	Pk E21 9.0	Pk E31 14.0	Pk E12 157.0	Pk E22 1.0	Pk E32 0	Tot E32 0
10 BLER 12.2	10 E11 9.2	10 E21 2.9	10 E31 2.1	10 E12 25.2	10 E22 0	10 E32 0	GRADE F

UPC/EAN:

MID code: CMC Magnetics

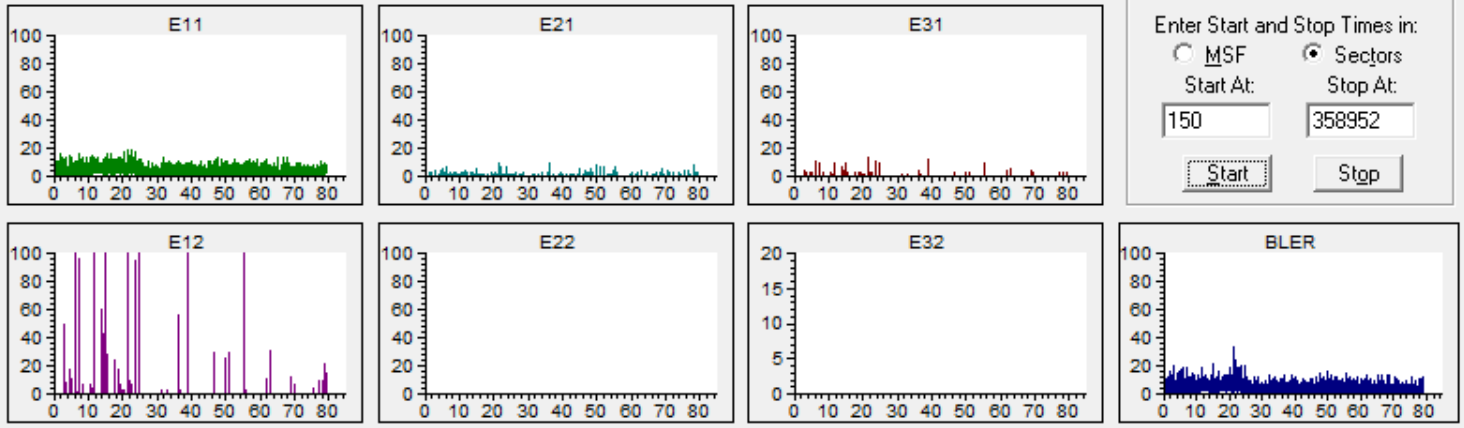
Record Mode: Track-at-Once

Verify Errors:

PostGap: Skew:

Test:
 Analog Analog Only
 Blank Test QuickScan

Enter Start and Stop Times in:
 MSF Sectors
Start At: Stop At:





DVX v3.1.7

Main View

Date: October 12, 2018

File: C:\Users\User\Documents\DVX Data\CMC-CDR-x16-1.cdx

Disc Type: CD-R 80 Sessions: 01 Tracks: 01 Format: Data - Joliet Disc ID: 30 map 2017 Block Size: 2048

Analog Values

Min REF 60.17	Min I11 0.52	Min I3 0.24	Min BETA 4.43	Min FE 10.19	Min TE 7.33	Min JIT 27.82
Ave REF 64.20	Ave I11 0.59	Ave I3 0.27	Ave BETA 10.16	Ave FE 22.81	Ave TE 16.52	Ave JIT 41.21
Max REF 65.93	Max I11 0.66	Max I3 0.30	Max BETA 13.07	Max FE 84.11	Max TE 27.48	Max JIT 54.64

UPC/EAN:

MID code: CMC Magnetics

Record Mode: Track-at-Once

Verify Errors:

PostGap: Skew:

Test:

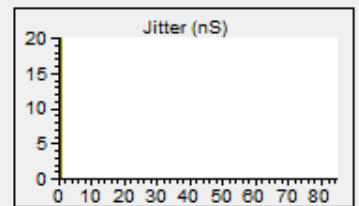
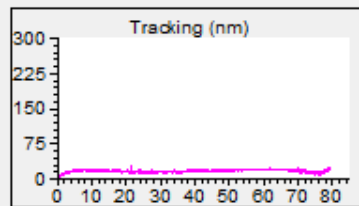
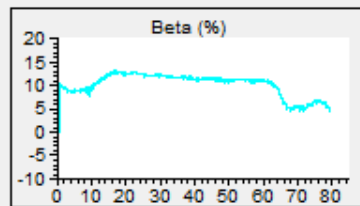
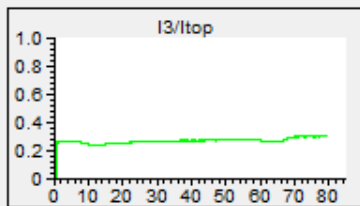
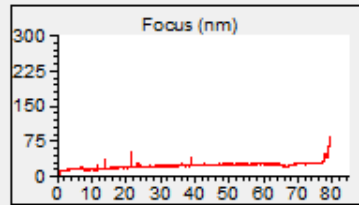
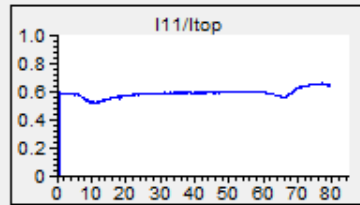
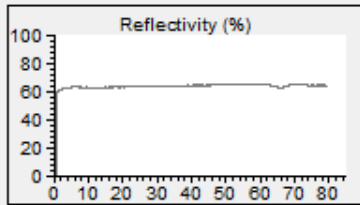
- Analog Analog Only
- Blank Test QuickScan

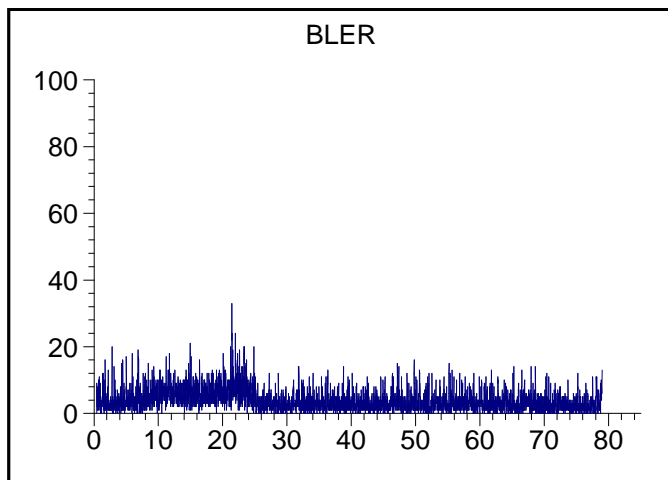
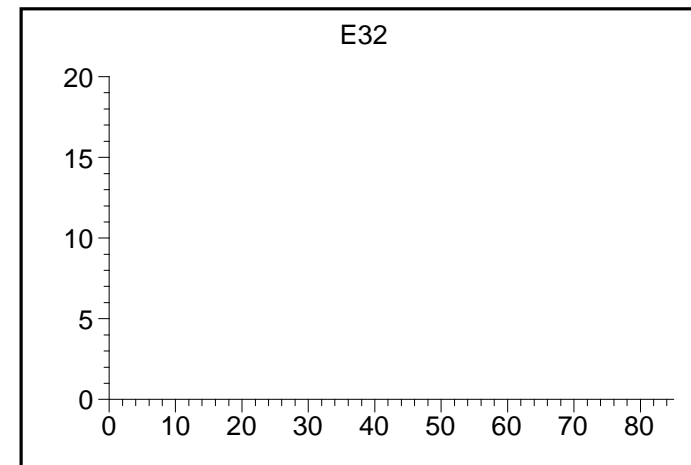
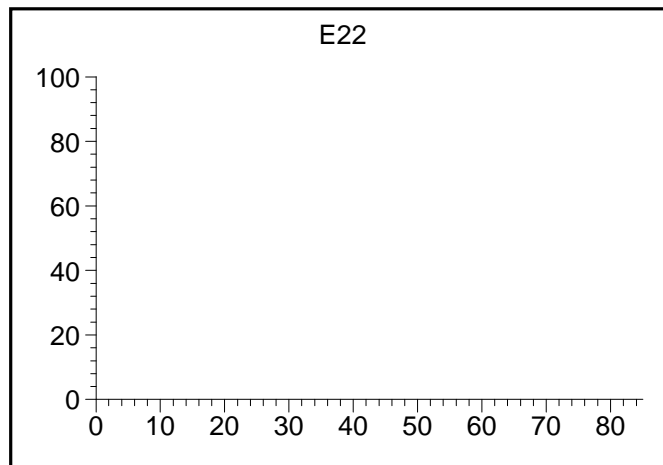
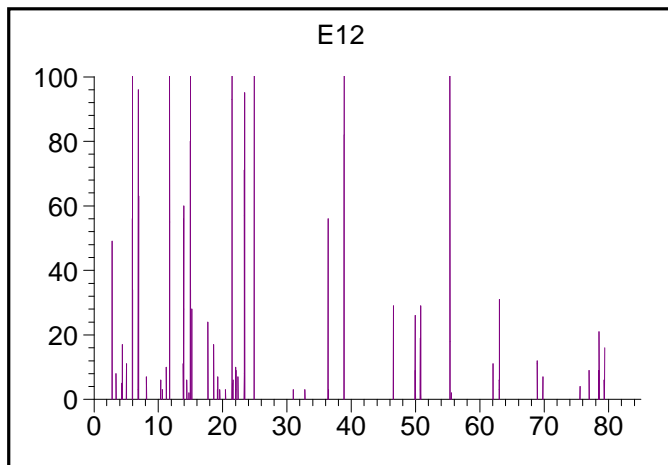
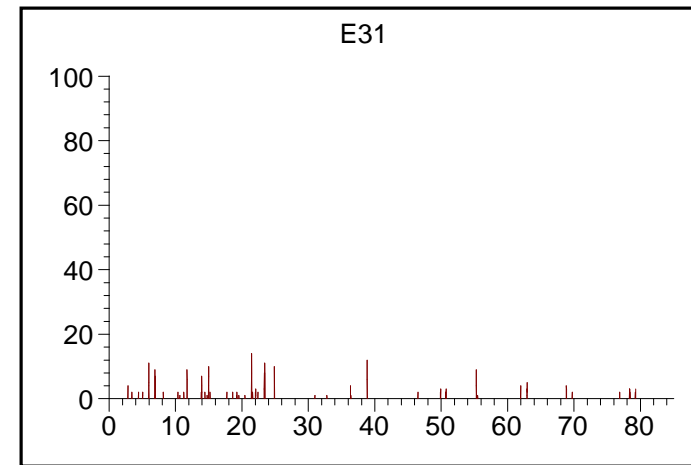
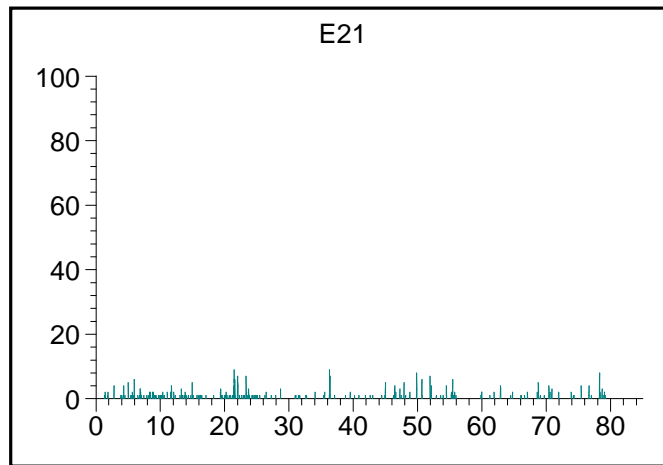
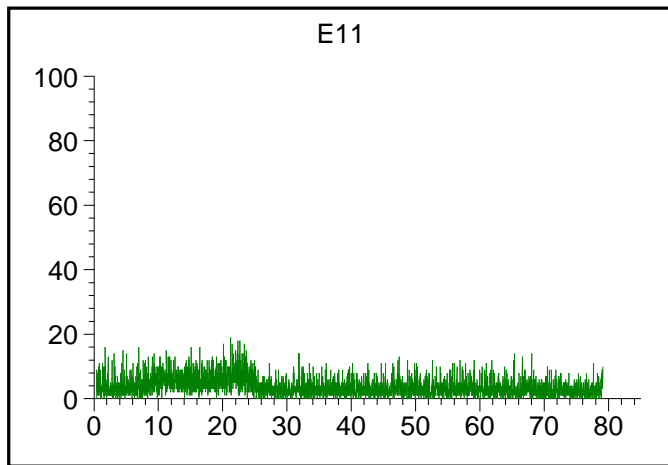
Enter Start and Stop Times in:

- MSF Sectors

Start At:

Stop At:

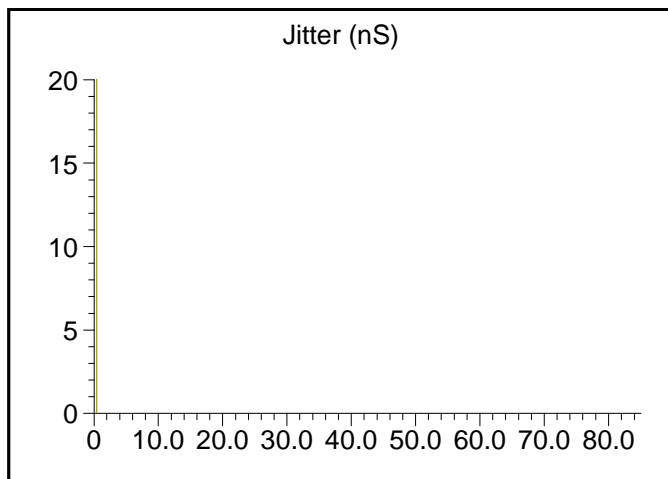
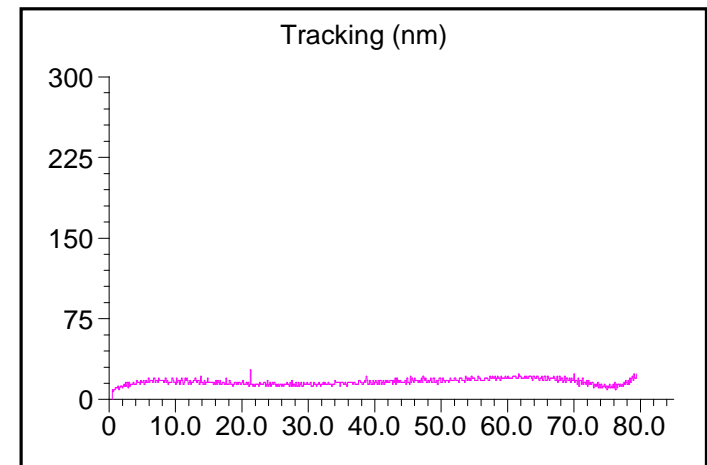
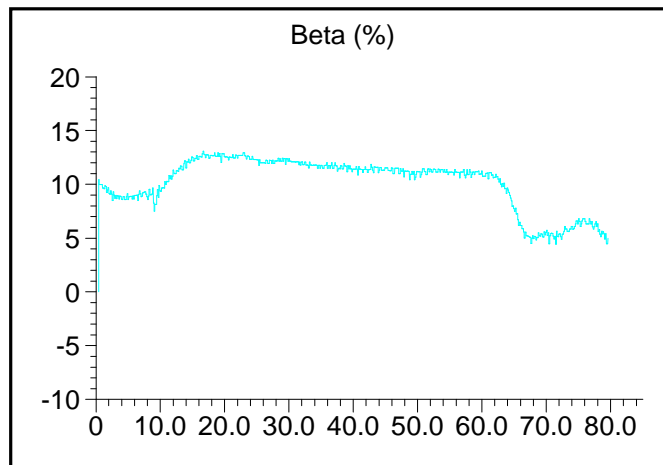
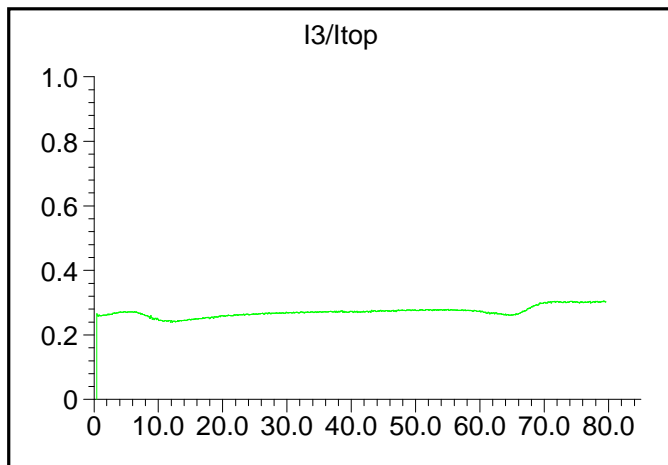
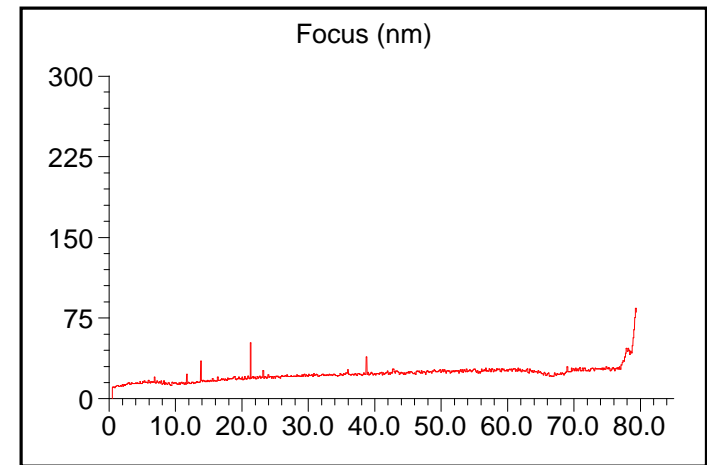
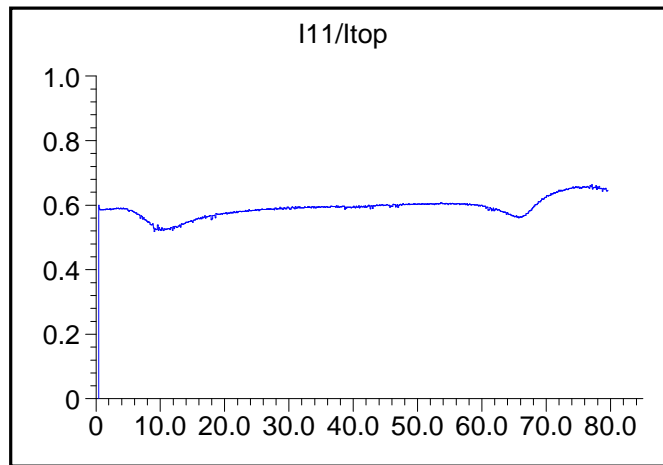
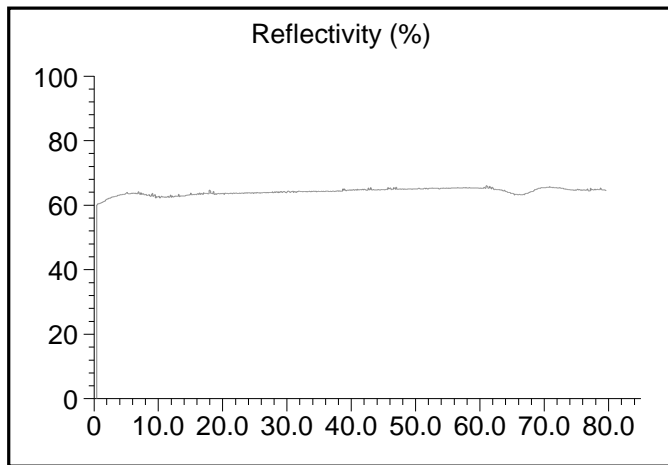




DVX™

DVD/CD Analyzer

Disc ID: 30 à¸¸ 2017
File: CMC-CDR-x16-1.cdx
Test Date: October 12, 2018
Test Speed: 24X MAX



DVX™

DVD/CD Analyzer

Disc ID: 30 à ð 2017
 File: CMC-CDR-x16-1.cdx
 Test Date: October 12, 2018
 Test Speed: 4X MAX



Summary of Results

DVX S/N: 268429

Date: October 12, 2018

Test Date: October 12, 2018 10:41

File: C:\Users\User\Documents\DVX Data\CMC-CDR-x16-1.cdx

Disc ID: 30 map 2017

User Entered Information:

Label 6: CMC CD-R

Disc Type: CD-R 80

UPC/EAN:

Test Speed: 24X MAX (Analog Measurements are made at 4X)

QuickScan OFF

MID Code: CMC Magnetics

Sessions: 1

Format: Mode 1 Data - Joliet

Tracks: 1

Sector Size: 2048

Disc Size: 358802 Sectors; 700.8 MB

Record Mode: Track-at-Once

CIRC Test Results:

Av BLER = 3.8	Pk BLER = 33	10Pk BLER = 12
Av E11 = 3.7	Pk E11 = 19	10Pk E11 = 9
Av E21 = 0.1	Pk E21 = 9	10Pk E21 = 3
Av E31 = 0.1	Pk E31 = 14	10Pk E31 = 2
Av E12 = 0.6	Pk E12 = 157	10Pk E12 = 25
Av E22 = 0.0	Pk E22 = 1	10Pk E22 = 0
Av E32 = 0.0	Pk E32 = 0	10Pk E32 = 0
Tot E22 = 0	Tot E32 = 0	
Grade = A		

Analog Test Results:

Min. Ref = 60.2%	Ave. Ref = 64.2%	Max. Ref = 65.9%
Min. I11 = 0.52	Ave. I11 = 0.59	Max. I11 = 0.66
Min. I3 = 0.24	Ave. I3 = 0.27	Max. I3 = 0.30
Min. Beta = 4.4%	Ave. Beta = 10.2%	Max. Beta = 13.1%
Min. FE = 10.2	Ave. FE = 22.8	Max. FE = 84.1
Min. TE = 7.3	Ave. TE = 16.5	Max. TE = 27.5
Min. Jitter = 27.8	Ave. Jitter = 41.2	Max. Jitter = 54.6

Blank Disc Test Results: Not Performed

CIRC Test * FAILED *****

Pk E22 Over Limit



DVX v3.1.7
Summary of Results

Page No. 2

Analog Test *** FAILED ***

Min I11 Under Limit

Min I3 Under Limit

Max JITTER Over Limit

Warning: Beta Variation Over $\pm 2\%$

Data Verification Results: Not Performed

ISO9660 Format Results: Not Performed

Postgap Test Results: Not Performed

Subcode Skew Test Results: Not Performed

Clover Signature: